



Puke Ariki

Pukekura Park Portal Project
Community Partnership Fund

A guide for users of the kete.pukekura.org.nz and the related maps of Pukekura Park

<http://kete.pukekura.org.nz>

The Kete is designed as an on-line library holding community resources. We encourage viewers who are knowledgeable about the Park and its history to contribute relevant images and documents. If you have further information or personal memories about any existing topics please add your comments.

Kete is designed to search for and relate files which have the same key words, or tags.

This guide provides an explanation of the main areas and tools that you see on the kete screen. The resources we hold are diverse and new material is added frequently, so please explore by clicking on tags that are of interest to you. You can always reverse out of an exploration by using the 'back button' in the top left-hand corner.

The following guide introduces the layout of kete and then gives you an example of a search with the link to the GISBoost™ maps which are provided by NPDC GISBoost™.

Table of Contents

Layout	2
Collections	3
Exploring a 'collection'	3
Example using the 'search' facility.....	5
Example of a Web Link	5
Connecting to the online maps of Pukekura Park	6
Link to Pukekura Park maps	6
A Guide to the GISBoost™ Map Viewer.....	7
A quick guide to tools	7
Slideshow of GISBoost™.....	7
Commenting and contributing material to kete.....	8
Registration to contribute.....	8
Commenting and adding items to kete	8

Layout - The kete screen opens on the home page, as seen below.

Move back and forth between screens using the 'back' and 'forward' buttons



The screenshot shows the Kete Pukekura Park website. Key elements are circled in red:

- Navigation buttons (back and forward) in the browser window.
- The search bar at the top right.
- The main navigation menu (Home, About, Help, Contact, Add Item) and user options (register, login).
- The 'Keyword Search' box on the right side.
- The 'Contents by type' list on the right side.
- The 'Random Image from the Archive' section with a photo of a man in a hat.
- The 'Tags' section at the bottom right, showing a list of keywords with varying font sizes.
- The 'Latest 10 topics' section on the left, listing items like 'Significant Plants in Pukekura Park' and 'Walks in Pukekura Park'.
- The 'Enter your wildlife data here' form at the bottom left.

Search the entire kete

Major contributors have material in their own 'baskets' with agreed copyright

Search the entire kete for a keyword

The maps of Pukekura Park are accessed here on a

Kete lists items by the file type. If you are looking for an audio recording, then select **audio**.

Click on any **topics** to see more

Click on the image for a close-up

'Tags' are the keywords which link files. This is a 'tag cloud'.

Click on the subject of interest.

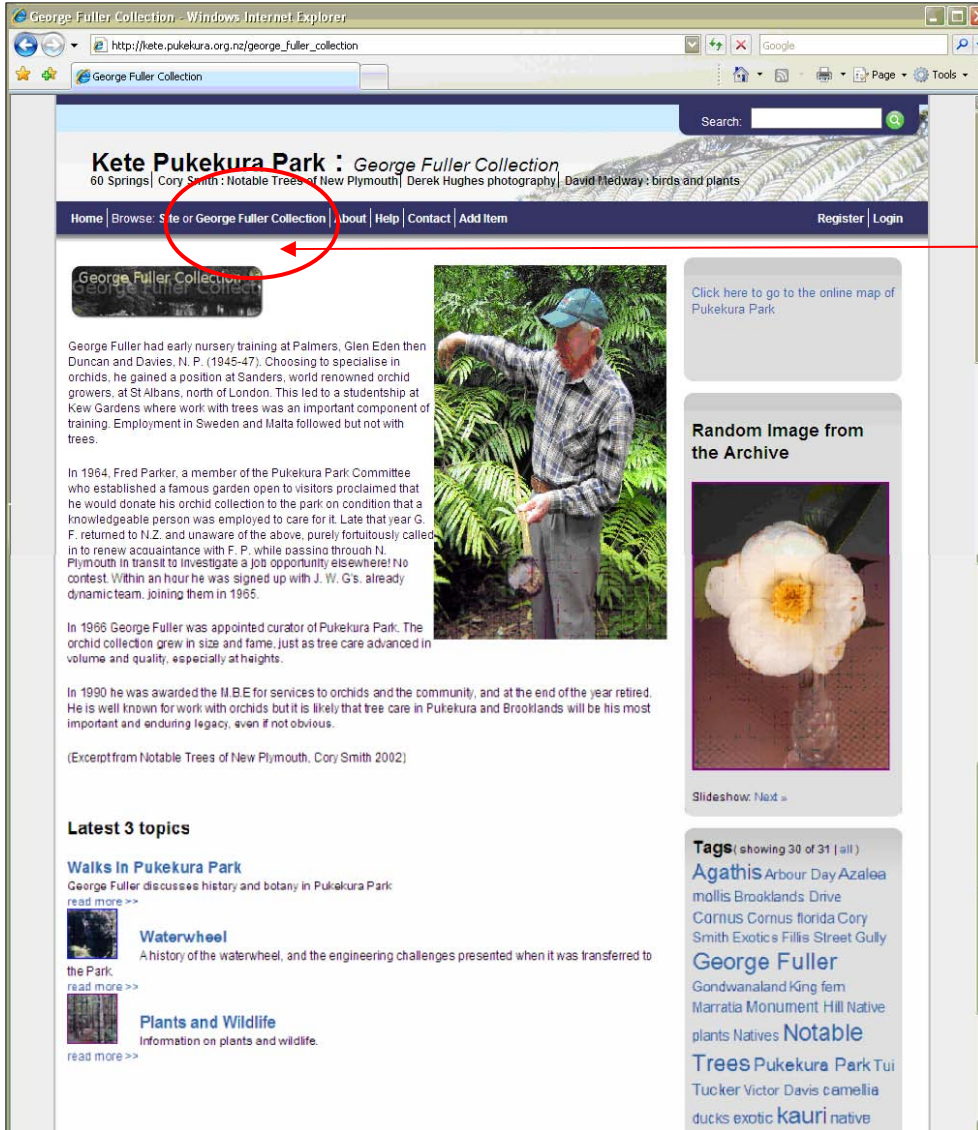
The larger the tag's font, the more articles will be found on that subject.

[Back to Table of Contents](#)

Collections

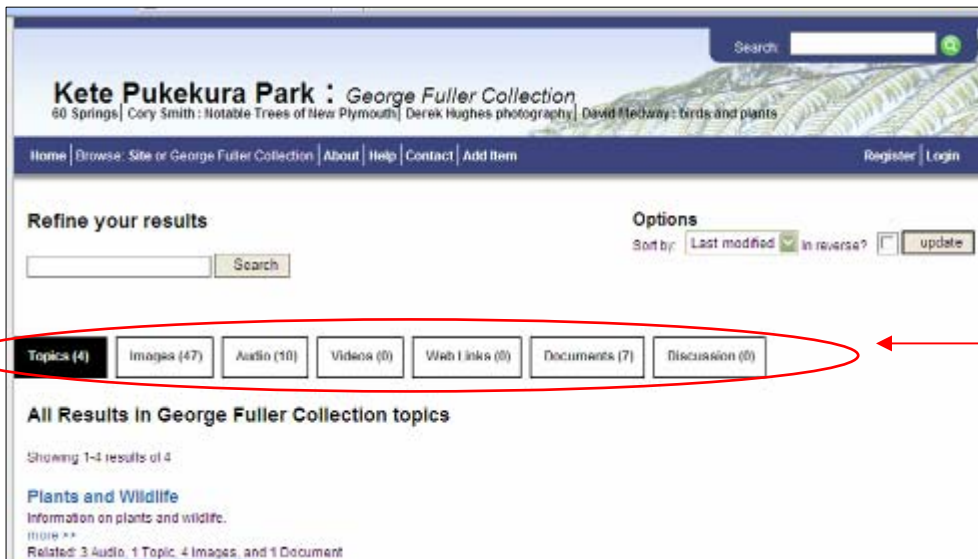
Major contributors have material in their own 'basket' with agreed copyright.

Mr. George Fuller, O.B.E, a former curator of Pukekura Park, and renowned plantsman, has gifted his collection of images and documents to the project partners, Friends of Pukekura Park and Puke Ariki, to use in this project. See the George Fuller Collection home page below.



Explore the 'George Fuller Collection' by clicking on the title in the blue bar

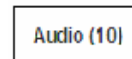
Exploring a 'collection'



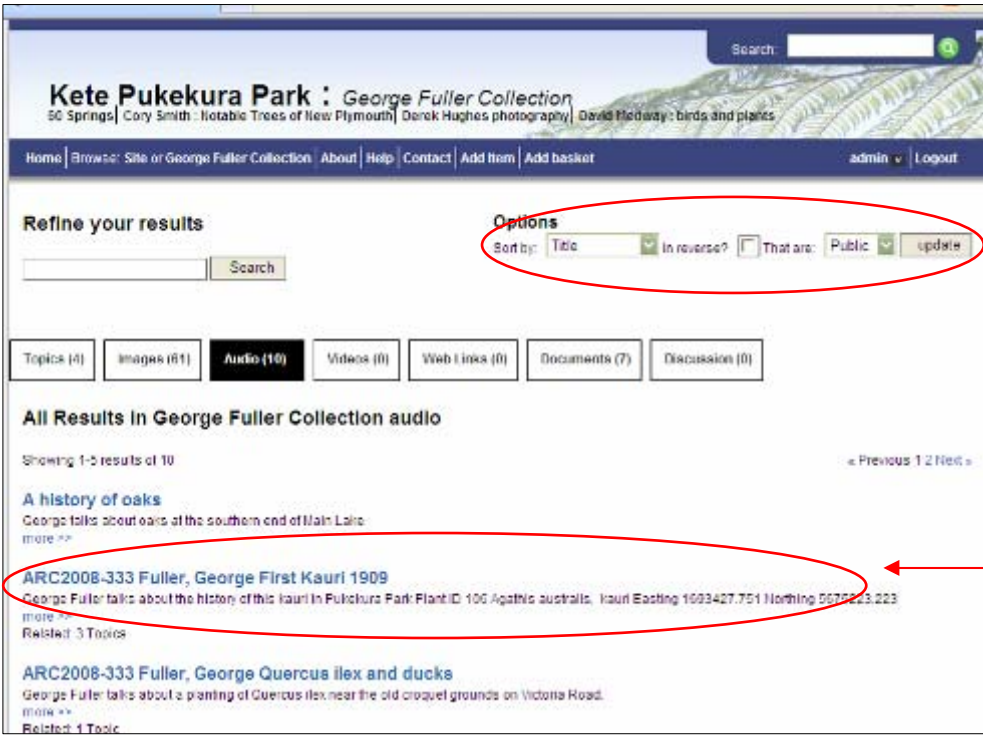
The George Fuller Collection opens on this screen

Examine the range of resources in the collection by choosing one of these boxes.

Open the audio collection.



[Back to Table of Contents](#)



Kete finds all the audio files in the George Fuller Collection

The results for the audio files may be sorted by title or date.

If you want to see the audio collection in the entire kete, then you need to go back to the "Home" page.

Select the audio about the first kauri tree planted in Pukekura Park.



Check the file size – large files may not work well on 'dial-up' Internet. Broadband download should take 10-20 seconds for this file.

Listen by clicking here. (Most computers come supplied with a programme to play MP3 audio files)



This link indicates that this particular plant may be found in the Park. Click here to open a map of the significant Kauri trees in Pukekura Park. You will need to reverse out of the maps to return to this page. See the guide to using online maps here.



Click on the Tags to see other related items in the George Fuller Collection

[Back to Table of Contents](#)

Example using the 'search' facility

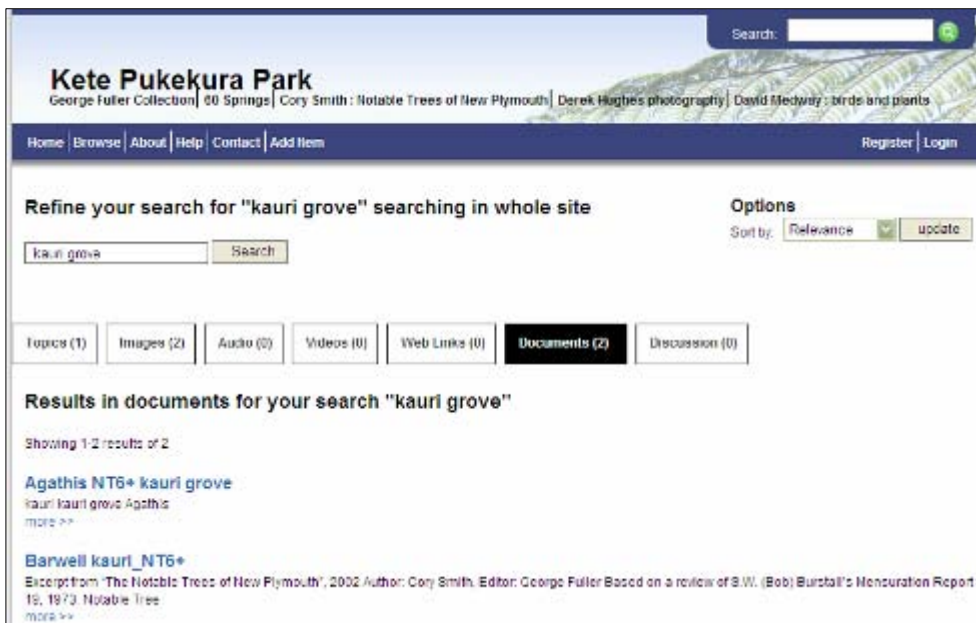
To find more about kauri trees in the entire kete, explore the 'site'
- click on the title at the top of the page

Kete Pukekura Park :

Type 'kauri' into the keyword search, or into the general kete search.

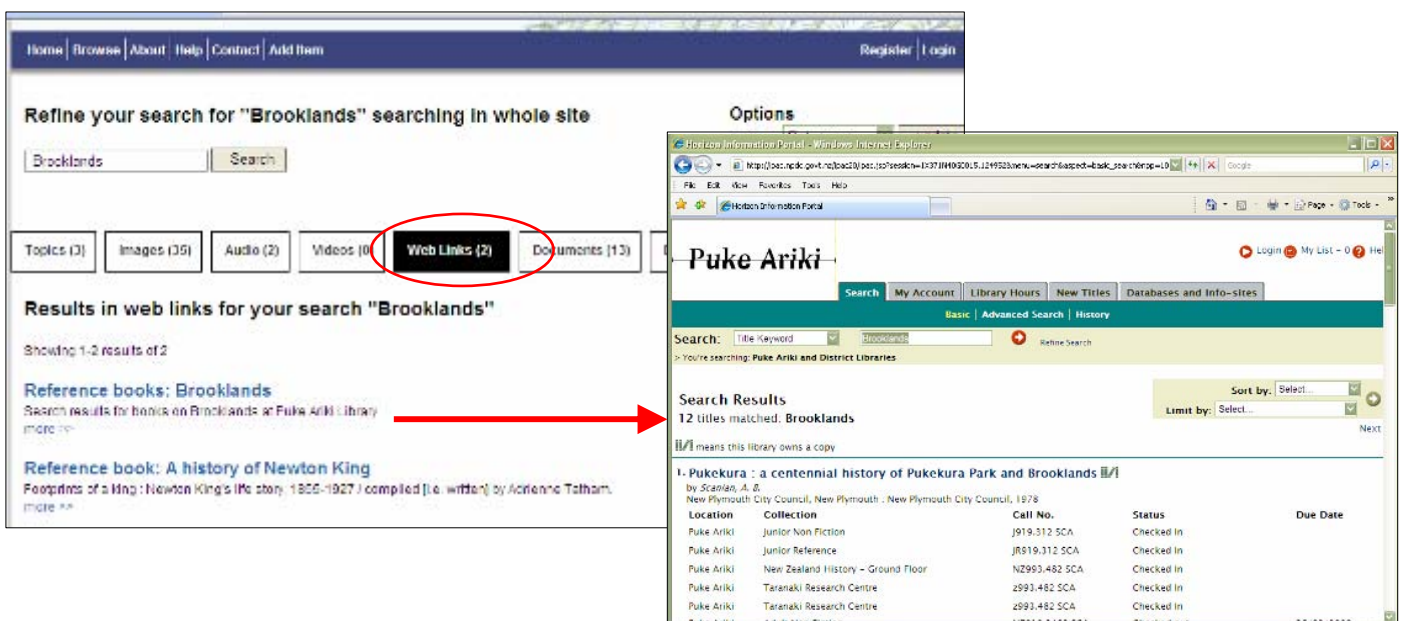


You can then see what resources exist, and refine the search further in any of the topics, images, audio, video, web links or document categories. Below we searched for kauri, then selected 'documents' and in those looked for any reference to "kauri grove". Two documents refer to a "kauri grove".



Example of a Web Link

Search for 'Brooklands', and then go to 'Weblinks'. The results are linked websites which have information relating to Pukekura Park.



[Back to Table of Contents](#)

Connecting to the online maps of Pukekura Park

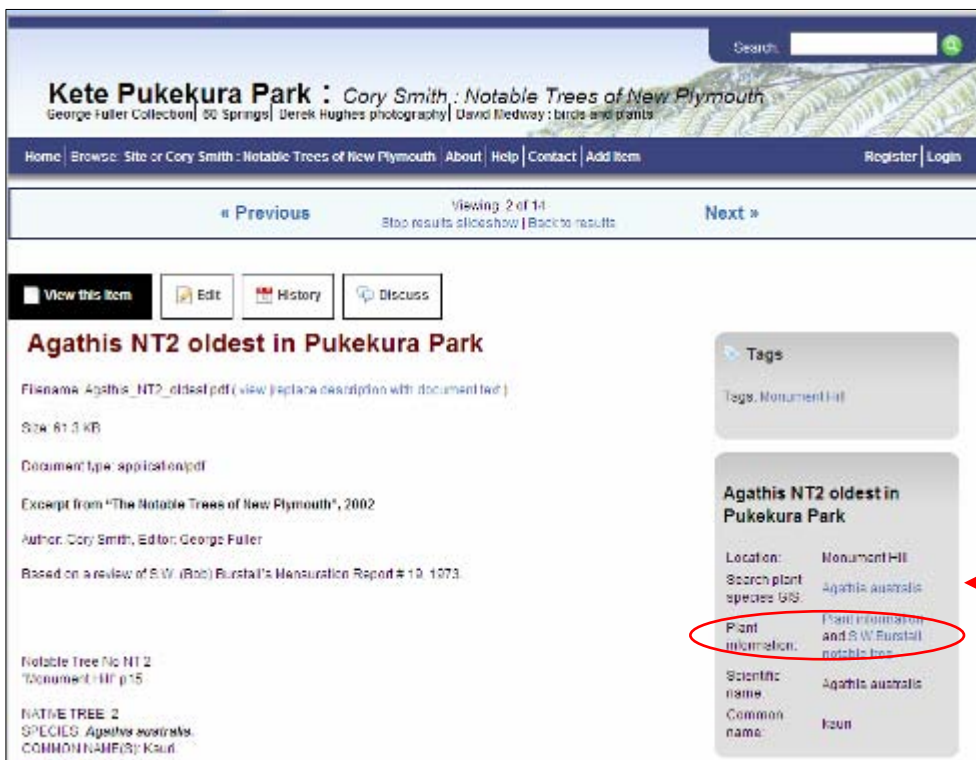
The Pukekura Park mapping service is provided by [New Plymouth District Council and the GISBoost™.](#)

The Friends of Pukekura Park provided the information on plant locations and have additional tables of data about date of planting, reason for planting, historic measurements, bird food value, ethnobotany and other information useful to the botanic garden. At present only the location of plants is shown on the maps, as a start to a comprehensive and necessary project for the management of Pukekura Park.

It is anticipated that we will soon have further layers of information, not only concerning the history of places in the Park, but also such essentials as path names and the location of facilities.

Link to the Pukekura Park maps.

Those plants which have information in the kete and have been identified in the Park may be found using the on-line maps. Clicking on the link takes you to the maps directly.



If there is a link in the right hand panel you may view the map of the Park relating to specific plant species.

You may wish to have a map of the Park open all the time in its own window, and to move back and forth between it and kete. Open the maps by clicking on the link on the side and at the bottom of any page.

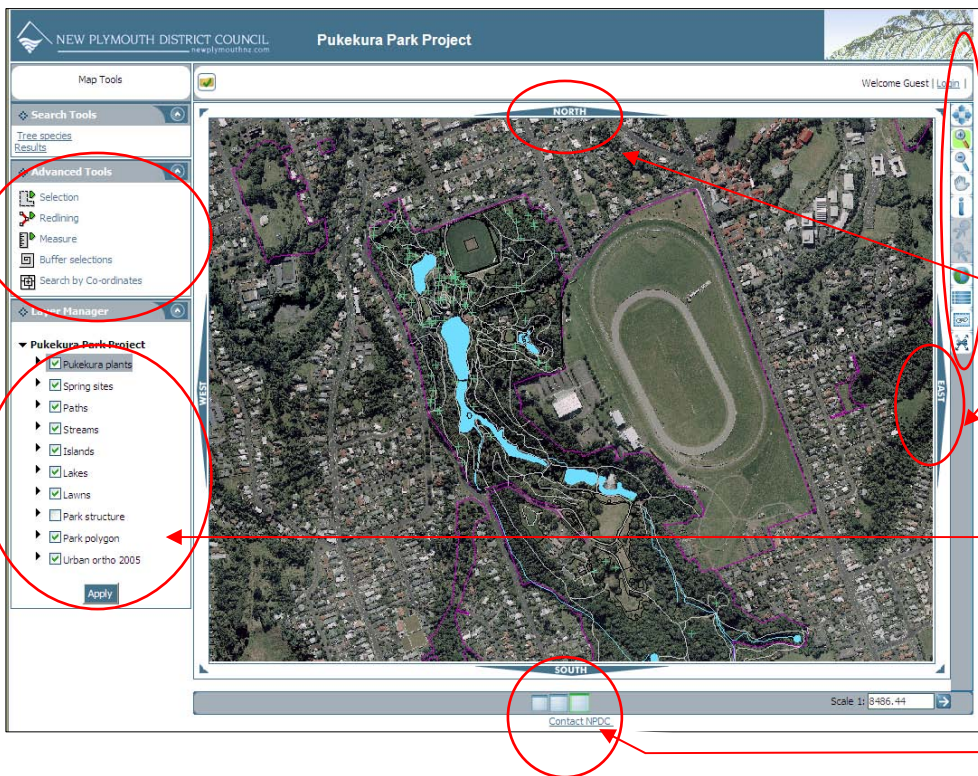
[Click here to see maps of Pukekura Park](#)

The GISBoost™ will assist you by automatically returning to kete and searching for archival information on the plant species you selected.

[Back to Table of Contents](#)

A Guide to the GISBoost™ Map Viewer

The GISBoost™ provides maps of Pukekura Park. These are being developed as more information becomes available. Currently the maps display the main geographic features.



Toolbar – see details below

Move the map to right or left with these controls

Layers available – tick to select those showing, and ‘apply’

Enlarge or shrink the map to fit your screen

A quick guide to tools



Show full map extent

Zoom in

Zoom out

Drag and pan

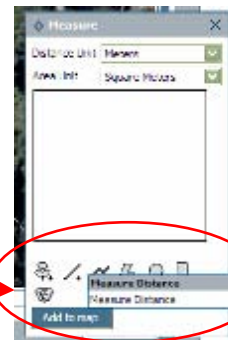
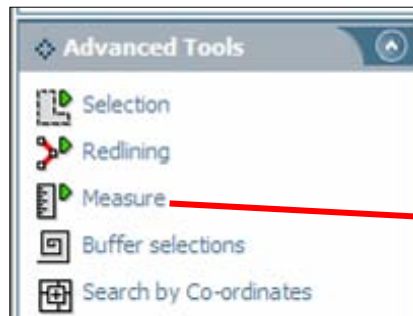
Identify

Overview map

Legend of current map

Generate url

Layout tool – restore to original position



Slideshow of GISBoost™

[Click here to see a demonstration of some features, and how to find information on particular plants.](#)

This slide show is hosted by Google Docs, to facilitate quick downloading.

[Back to Table of Contents](#)

Commenting and contributing material to kete

We would like viewers to contribute their perspectives on the history in this kete.

Registration to contribute

You may register as a user (simply supply your email address and provide the kete with your own password).

If you have additional material – images, documents web-links or audio files – please load them to the site basket.

The original kete Horowhenua has produced comprehensive instructions to guide this process, so visit them by clicking this logo below (CTL + click to follow link).



Commenting and adding items to kete

All documents in kete have a 'discuss this topic' panel. Click on 'join this discussion' to type in your comments.

Discuss This Topic

There are 0 comments in this discussion.

[join this discussion](#)

[Back to Table of Contents](#)