

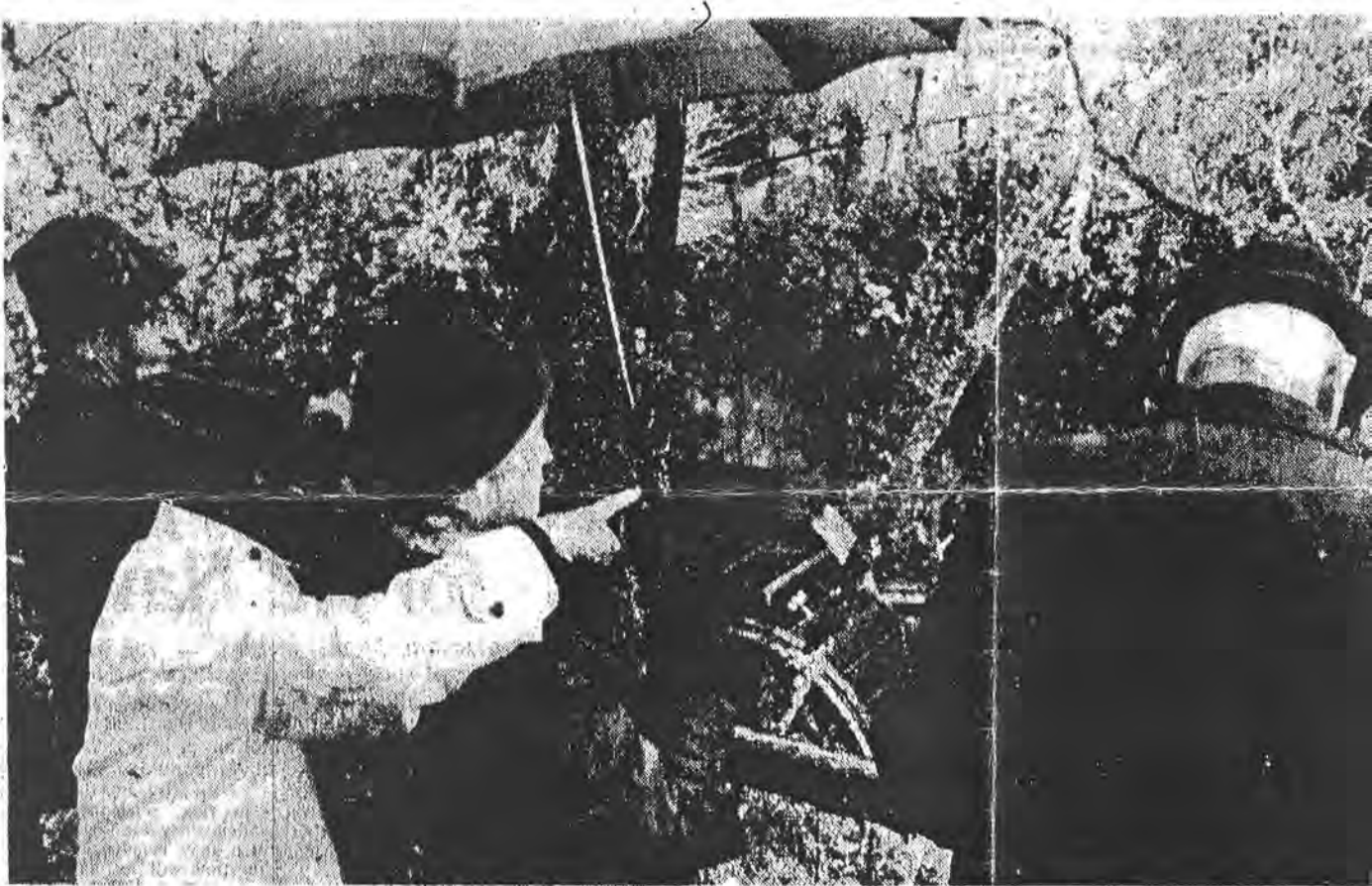
Park's 100 years

Rain dripping from tree leaves and a misty drizzle didn't seem to bother about 30 New Plymouth City Councillors, council staff and members of the public (above) who attended the official opening of the waterwheel at Pukekura Park today.

The ceremony, conducted by the chairman of the Taranaki County Council, Mr L. D. Hickford, marked the centennial of Pukekura Park.

The chairman of the city council's parks and recreation committee, Mrs A. N. Gale, thanked many city groups and people who contributed to the waterwheel including the Taranaki County Council, which donated \$500 towards the cost.

This and other donations meant that ratepayers only had to pay for supervision, she said. It was hoped that a plaque would be installed at the waterwheel. The celebrations also included a tree planting ceremony at the park.



THREE WOMEN admire the water wheel and its surroundings at Pukekura Park today.