

Quiz

True or False??

Fish

at Pukekura Park

- 1 How long is the longest Goldfish in the world?
A 2 cm
B 17.1 cm
C 47.4 cm
D 65.8 cm
- 2 Where is the best place to see Goldfish in Pukekura Park?
A In the row boats
B In the main lake
C In the lily lake
D In the Bowl of Brooklands lake
- 3 Where do Goldfish originally come from?
A New Zealand
B China
C Australia
D Canada

- 1 Goldfish eat vegetables
True or false?
- 2 Goldfish are fluent in Chinese
True or false?
- 3 Goldfish live in slow moving bodies of water
True or False?



True or false questions
1 True, 2 False, 3 True

Answers
Quiz
1 C, 2 B, 3 B

IN PARTNERSHIP WITH



Puke Ariki



NEW PLYMOUTH DISTRICT COUNCIL
newplymouthnz.com



By Kaitlin Johns,
Mandi Silvennoinen, Ashlin McAlpine,
Flavia Coppell and Sarah Motion.

Devon Intermediate School
New Plymouth

60 Springs

Pukekura Park

Location
The main entrance at Fillis Street has easy access from the city centre, but there are actually 22 pedestrian entrances where you can enter the park.

Opening hours
7.30am - 7pm and until 8pm during daylight savings.

Pukekura Park

Pukekura Park is a great place for learning and fun for all ages. Apart from the main park there is also Brooklands Zoo, Brooklands Park and the Bowl of Brooklands, each with many things to enjoy.

There are many types of fish in the park, some of which are mentioned in this brochure. Some of them are introduced species, others are native. You will often see big goldfish in the main lake along with Boris the Eel. Did you know that there are 60 springs in the park? That's how the name of our project came about. The result: These amazing brochures!!

Perch

Perch is a freshwater fish. Perch grow to around 2.3 kg or more, but the most common fish to be caught are around 0.45 kg or less.

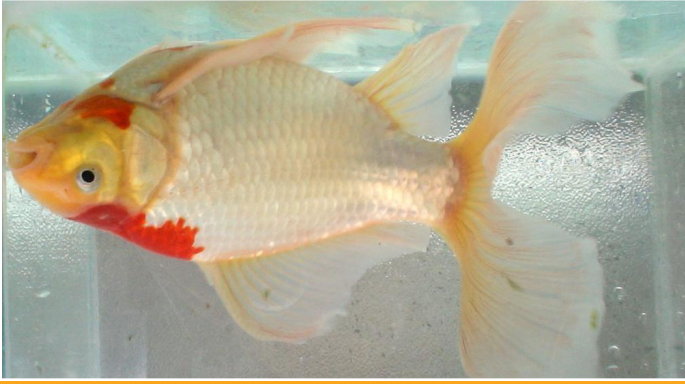


Eels

Eels- Look closely they hang round when feeding ducks.



Giant Goldfish



This biggest goldfish is 47.4 centimeters from snout to tail fin. It received the record on March 24, 2003.

Facts on Goldfish

Origin

China

Diet

In the wild, the diet consists of crustaceans, insects, and various plants. In captivity, they do best with a wide variety of fresh vegetables and fruit to supplement a flake or pellet diet.

Habitat

Goldfish usually live in ponds, and other still or slow moving bodies of water and they live in freshwater

People release them to other lakes so they spread.